



Thruyton 1200 Airbox Removal Kit Instructions

This Airbox kit is built By Triumph Performance Parts Australia

It is highly recommended you read and understand these instruction in full before commencing.

As this kit requires a fair bit of Mechanical knowledge

It is recommended this kit be installed by a Qualified Technician.

Estimates Install time is around 3 hrs

Components List

1 x Battery box

2 Air Filters

1 x Crank Case Breather

2 x Filter adapters attached to filters

1 x Crank case Filter Clamp

1 Battery Strap

2 relay Support Brackets

2 Air Filter Clamps

4 x M6 x 20 Cap screws

4 x M6 x 15 Cap screws

8 x m6 flat washers

8 x m6 Spring Washers

2 x speed clips Installed on battery box

5 Cable Ties

1 set of instructions



Thrupton 1200 Airbox Removal Kit Instructions

Step 1

Remove Seat and Battery

Unclip ECU retaining Cover and lift up ECU

Disconnect Tail light Connector

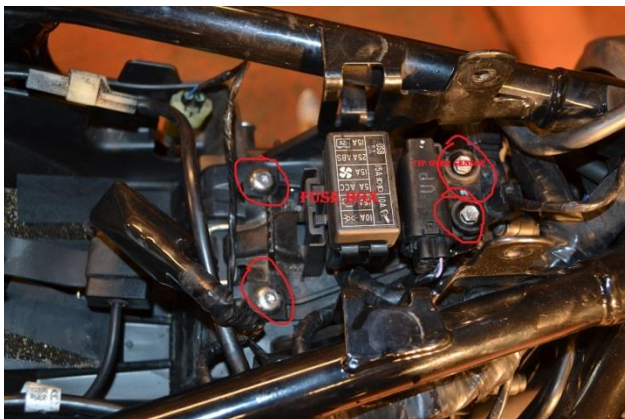
Remove 4 x M8 Bolts holding rear Guard and the 2 x M8 holding front of Guard Located Underneath

Remove Rear Guard and Fuel Tank



Step 2

Remove the 2 x M7 bolts Holding the Tip over sensor then the 3 Bolts holding the Fuse box (Note 1 bolt is located under the Tip over sensor for fuse Box)



Step 3

Remove 3 bolts Holding Relay Support Bracket on RH side of air box



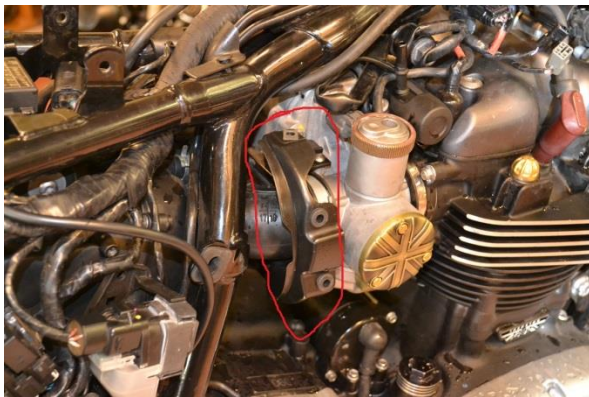
Thruxton 1200 Airbox Removal Kit Instructions



Step 4

Remove RH Side Inlet Hose cover and support bracket. Repeat for LH side

Loosen Inlet rubber clamps and slide back



Step 5

Remove top LH and RH Airbox support Bolts then remove LH tank breather bracket

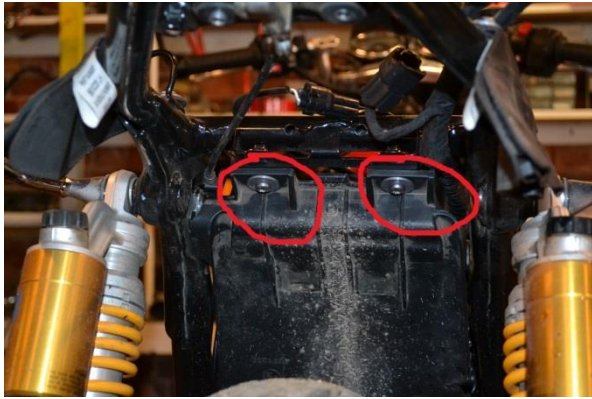


Step 6

Remove 2 Bolts at rear of Air box then remove Crankcase breather hose at front of air box
Disconnect Breather Hose Below Inline filter and from Air box Leaving Bottom hose connected to Engine.

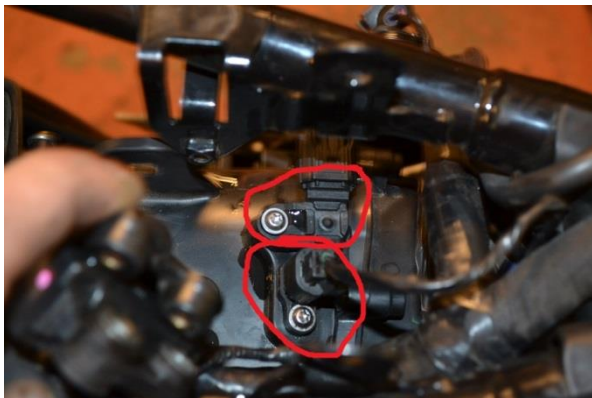


Thruxton 1200 Airbox Removal Kit Instructions



Step 7

Remove the screws holding both air box sensors and remove sensors. Ensure Wiring is kept plugged in to sensors.



Step 7

Secure bike with a Lift jack to raise rear wheel off the ground and remove rear wheel.

Step 8

Slide the air box out through the back of the bike. You may need to gently push the front air tubes off the throttle bodies first.

Step 9

Remove the 2 Rubber side panel grommets from air box and fit to new battery box.

Remove air box snorkels from old airbox. This can be done easily by pushing rubbers in toward centre with thumbs to break the seals while pulling out.



Thruyton 1200 Airbox Removal Kit Instructions

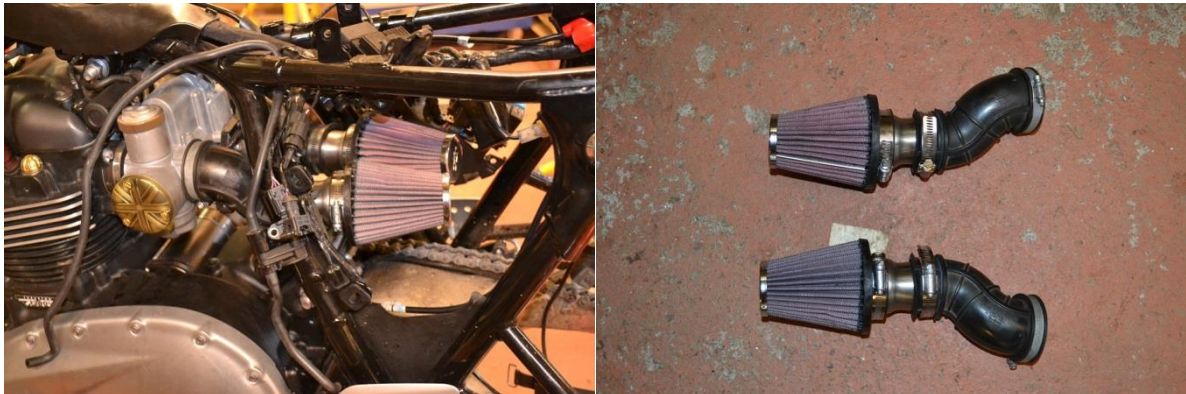


Step 10

Fit Filters and adaptors to snorkels as below.

Then fit Snorkels and filter assembly to throttle bodies. Position filters so both filters are straight to each other and tighten clamps.

Install Air case breather filter to breather hose and tighten. This will sit nicely between both filters facing up.



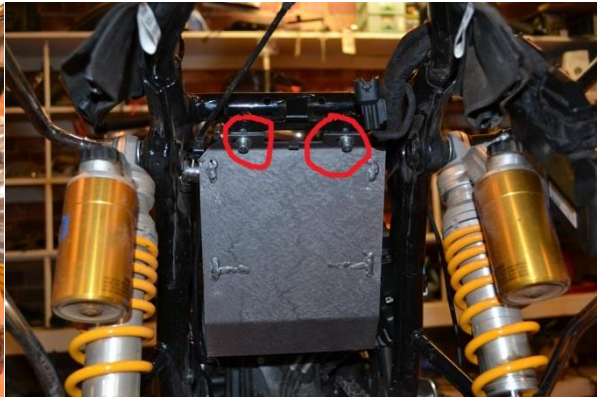
Step 11

Install Battery Box with supplied m6 x 15 Cap screws x 4 with washers and spring washers as below

On the right hand side front Battery box mount also Install Front relay bracket at the same time



Thruxton 1200 Airbox Removal Kit Instructions



Step 12

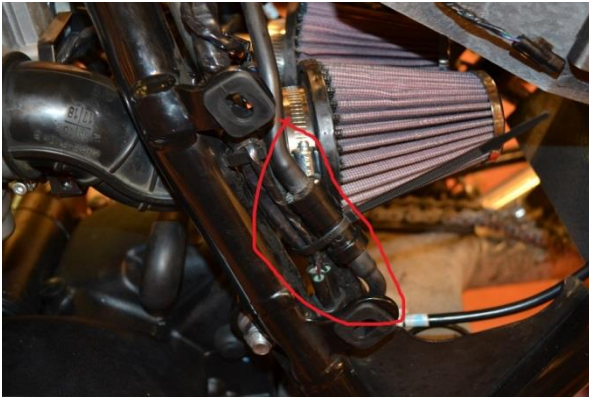
Install Fuse box as Picture with Original M5 Bolts and Install Tipover sensor with original bolts



Cable tie Fuel drain pipe to frame as shown



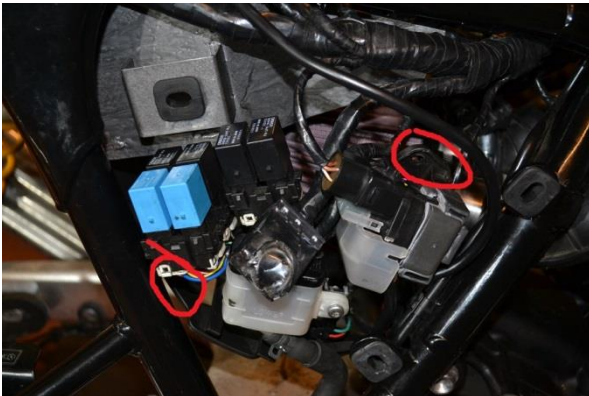
Thruyton 1200 Airbox Removal Kit Instructions



Step 13

Install Rear Relay support bracket to M6 hole in RH bottom of guard.

Bolt both brackets to Relay Support board where show below with M6 x 20 mm bolts supplied with washers and tighten all 4 bolts of brackets.



Step 14

Check all wiring to ensure it is not rubbing on any components that may damage it and secure with cable ties where necessary.

Re- Install Fuel tank. Rear Wheel and seat

Install Battery with new Battery strap supplied

Re-install inlet pipe covers and supports

Refit side covers.

Step 15



Thruxton 1200 Airbox Removal Kit Instructions

Test ride bike and re-check all bolts and wiring.

